



 **FLUIDOTEHNIC**

# DEVICES AND SYSTEMS FOR CENTRAL LUBRICATION

---

CATALOG OF DEVICES

 [www.fluidotehnic.com](http://www.fluidotehnic.com)



# LUBRICATION TECHNIQUE

## CATALOG OF DEVICES

ABOUT COMPANY	4-5
PUMPS FOR OIL LUBRICATION	6-7
FILTERS (FOR OIL LUBRICATION)	8-9
FLOW INDICATORS	10-11
ELECTRIC MOTOR MULTILINE PUMPS	12-19
ELECTRIC MOTOR PUMPS	20-22
ELECTRIC MOTOR PUMP FOR CENTRAL SUPPLEMENT	23
ELECTRIC MOTOR PUMP FOR GREASE TRANSFER	24-25
PNEUMATIC PUMP FOR LUBRICATION	26
PNEUMATIC PUMP FOR OIL DRAFT	27
DUAL LINE HAND PUMP	28
HAND PUMP (FOR LUBRICANT TRANSFER)	29
FOOT PUMP (FOR GREASE LUBRICATION)	30
POWER UNIT FOR MULTILINE LUBRICATION	31-33
UNIT FOR DUAL LINE LUBRICATION	34-37
ELECTRIC COMPACT UNIT (FOR SINGLE GREASE LUBRICATION)	38
PNEUMATIC PUMP FOR SINGLE LUBRICATION	39
PNEUMATIC UNIT FOR SINGLE LUBRICATION ON CART	40
ELECTRIC CONTROL UNIT	41
DOSING DISTRIBUTORS	42-45
CHANGE-OVER VALVES	46-52
CONTROL DEVICES	53-55
PRESSURE RELIEF VALVE	56
PRESSURE LINE FILTER (FOR GREASE LUBRICATION SYSTEMS)	57
GUN FOR LUBRICATION	58





- FLUIDOTEHNIC's production program is based on its own development. Thanks to that, all the products are the result of the engineering staff work, as well as the quality and skilled workers in manufacturing and installation. Each serial product during the conquest passes through the phase of prototype development, functional tests and check in real operating conditions. Following step is removal of all possible defects and then, based on that, test series is produced. This is how we achieve high quality of manufactured devices. In case of the individual production, after the functional testing, we deliver the product to the customer.
- Since its foundation FLUIDOTEHNIC Ltd. has been continuously investing both in the expansion of commercial building and the purchase of modern equipment for the production, control and techno-economic support. It is located in the industrial zone of Vrnjacka Banja, on a lot size ~ 2ha. It consists several buildings, connected into a functional whole area of 4000 m<sup>2</sup>. The whole complex is adjusted to the environment- we are taking good care of health, work safety and environmental protection.



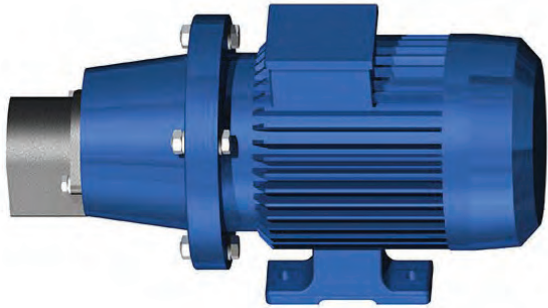




- Market research, device development, technical assistance and personnel training free of charge for all our customers is the main task of this service. Many years of experience in the development tasks of hydraulics, pneumatics and lubrication techniques, as well as the latest computer technology guarantee that our customers will get the optimum technical solution. During the development, every device passes precisely defined procedure, starting from making the design concept, followed by manufacturing and testing prototypes and going into production.
- It consists of several facilities and departments: foundry of non-ferrous metals, mechanical drive, locksmith department, installation and technical control. All operations from the casting to the final machining are performed with the universal and software machines. Control and assembly is 100%. When the assembly is finished, each device is being tested on the test stand and on the basis of the results it gets the appropriate certificates and guarantees. On each call of the user, service teams come in as soon as possible, with spare parts and the necessary tools, regardless of whether the equipment is in warranty or out of warranty period.



## PUMPS FOR OIL LUBRICATION

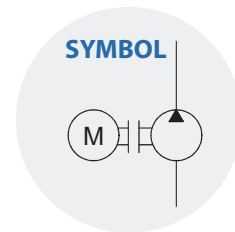
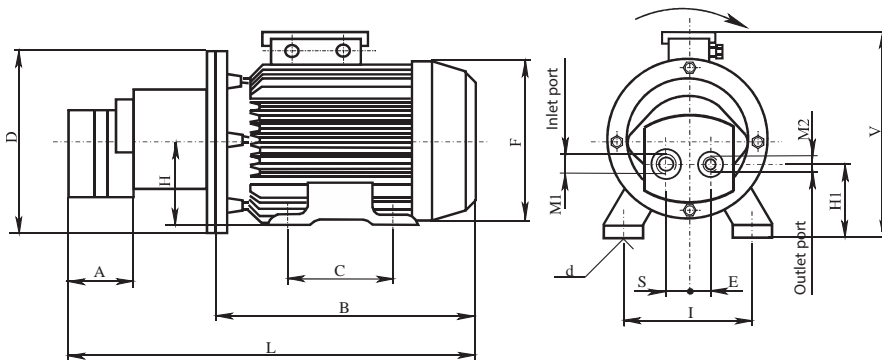


The main parts of the unit are low-pressure gear pump, bell housing and electric motor. The pump shaft and driving shaft of electric motor are connected by elastic coupling. The pump is designed to operate flawlessly with high-density hypoid oil as well as low density oil. It is very resistant to metal particles which may occurs in oil due to wearing of the gears. Because of its robust design, the unit is applicable in plants with hardest working conditions, such as iron plants, cement works, surface mines, etc. The mounting holes of the unit are on the electric motor base. On supplied two types of power units:

- without relief valve
- with relief valve

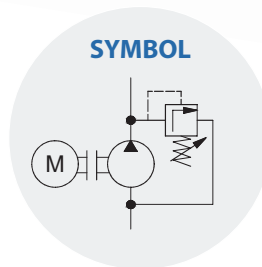
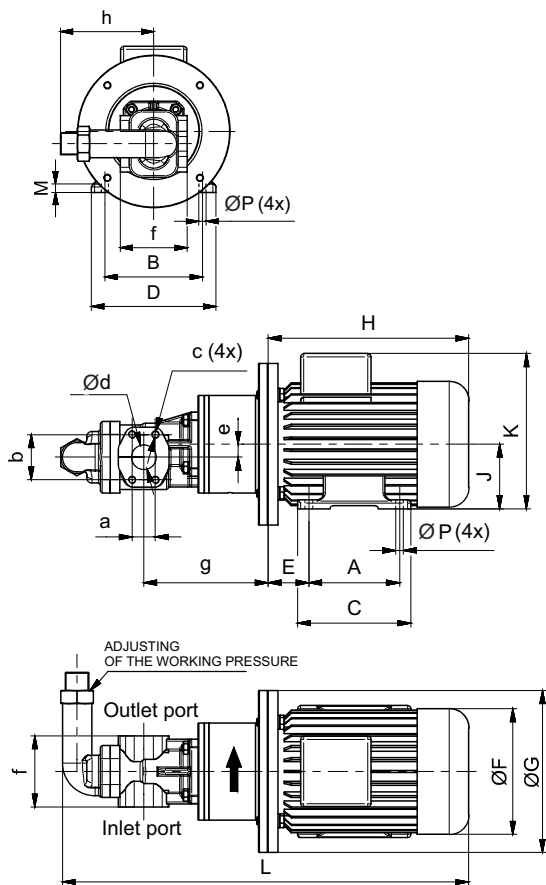
Units with other dimensions, hydraulic and electric characteristics are available on request.

Code	L	A	B	H	H1	I	C	V	D	F	S	d	E	M2	M1
10-0200	417	60	257	90	74	140	100	211	200	170	18	10	18	M16x1,5	M18x1,5
10-0210	427	70	257	90	74	140	100	211	200	170	18	10	18	M18x1,5	M27x2
10-0215	474	72	287	90	67,5	140	125	211	200	170	26	10	26	M26x1,5	M33x2
10-0217	492	82	295	100	77,5	160	140	257	250	193	27,5	12	26	M26x1,5	M42x2
10-0220	510	100	295	100	77,5	160	140	257	250	193	27,5	12	26	M33x2	M42x2



Ordering code			10-0200	10-0210	10-0215	10-0217	10-0220
Flow rate	(dm <sup>3</sup> /min)		10	20	40	60	100
Max operating pressure	(bar)		20	20	20	15	15
Admissible underpressure in the suction line	(bar)		0,25				
Admissible overpressure in the suction line	(bar)		0,5				
Fluid	Oil viscosity	(mm <sup>2</sup> /s)	13 - 800				
	Temperature	(°C)	-25 ; +80				
Electric motor	Power	(kW)	1,1	1,1	1,5	2,2	3
	Speed	(rpm)	1370	1370	1390	1410	1380
	Voltage	(V)	3x400 V 50 Hz				
	Insulation		IP 54 class E				
	Ambient temperature	(°C)	-20 ; +60				
Mass	(kg)		20	20	23	30	36,5

Ordering code	Operating pressure (bar)	Flow (dm <sup>3</sup> /min)	Fluid	Pump code	Electric motor (3x400V, 50 Hz)	Ambient temp.	Mass (kg)
10-0190 4-1000-15	0 - 16	3,3	Mineral oil - viscosity 10 to 1500 mm <sup>2</sup> /s	KF 4	0,18 kW, 870 rpm	-30 to +90°C	10
10-0190 6-1000-15		5,1		KF 6	0,25 kW, 880 rpm		11
10-0190 12-1000-15		10,2		KF 12	0,55 kW, 900 rpm		14,5
10-0190 20-1000-15		16,3		KF 20	0,75 kW, 900 rpm		22,3
10-0190 32-1000-15		26		KF 32	1,1 kW, 900 rpm		25,3
10-0190 40-1000-15		33		KF 40	1,5 kW, 930 rpm		34,3
10-0190 50-1000-15		41		KF 50	1,5 kW, 930 rpm		34,3
10-0190 63-1000-15		51		KF 63	2,2 kW, 930 rpm		37,3
10-0190 80-1000-15		65		KF 80	2,2 kW, 940 rpm		37,3
10-0190 112-1000-15		93		KF 112	4 kW, 950 rpm		58
10-0190 150-1000-15		119		KF 150	5,5 kW, 950 rpm		64
10-0190 180-1000-15		145		KF 180	5,5 kW, 950 rpm		66,6



Ordering code	A	B	C	D	E	F	G	H	J	K	L	M	P	a	b	c	d	e	f	g	h	
10-0190 4-1000-15	90	112	109	137	45	139	160	205	71	180	425	11	7	22,2	47,6	M10	19,5	14,2	100	134	100	
10-0190 6-1000-15			125	160	50	156	200	230	80	206	475	8	8	26,2	52,4		25			154		
10-0190 12-1000-15	100	125	130	170	56	176	200	250	90	222	512	13	9	35,7	69,9		38	20	110	163		
10-0190 20-1000-15			140	175	200	275	90	222	587	12	11	204										
10-0190 32-1000-15	125	140	155	175	56	176	200	305	100	240	637	12	11	35,7	69,9		38	20	110	184		
10-0190 40-1000-15								323	112	263	690	14								220		
10-0190 63-1000-15	140	190	170	200	63	194	250	323	112	263	690	14	11	35,7	69,9		38	20	110	204		
10-0190 80-1000-15																				841		16
10-0190 112-1000-15	178	216	218	260	89	258	300	435	132	300	861	16	12	50,8	88,9	M12	50,8	23,7	150	246		
10-0190 150-1000-15											877	16	12	61,9	106,4		76,2			150		264
10-0190 180-1000-15											877	16	12	61,9	106,4		76,2			150		274



SERBIA  
36210 VRNJACKA BANJA  
Rudjinci 175/A  
tel/fax: +381-36-631-710  
E-mail: office@fluidotehnic.com  
Web: www.fluidotehnic.com

Matični broj: 06568939  
Šifra delatnosti: 2822  
PIB: 100918689  
Reg. broj: 11506568939  
Br. Reg. Upisa: 1-14429-00



## EC DECLARATION OF CONFORMITY / DECLARATION ON INSTALLATION

DEKLARACIJA O USAGLAŠENOSTI / DEKLARACIJA O UGRADNJI

### We hereby declare that the following products

Izjavljujemo da su sledeći uređaji

**Electric driven pumps for grase lubrication** (Elektromotorne pumpe za podmazivanje mastima)

**Power unit for oil lubrication** (Elektromotorni uređaj za podmazivanje uljima)

**Pneumatic pumps for lubrication** (Pneumatske pumpe za podmazivanje mastima)

**Two line dosing distributors** (Dvolinijski dozatori)

**Progressive doser distributors** (Progresivni dozatori)

**Change-over valves** (Hidraulički razvodnici)

**Electric driven change-over valves** (Elektromotorni razvodnici)

**Pressure and flow valves** (Ventili pritiska i protoka)

### Are designed and produced in accordance with the safety requirements according to the following regulations:

Projektovani i proizvedeni u skladu sa bezbednosnim zahtevima prema sledećim propisima:

**Machinery Directive EC/2006/42**  
(Mašinska direktiva EC/2006/42)

**Low voltage directive EC/2014/35**  
(Niskonaponska direktiva EC/2014/35)

**in accordance with the following standards:**

i u skladu sa sledećim standardima:

**Safety of machinery - General principles for design**

- **Risk assessment and risk reduction EN ISO 12100:2010**

Bezbednost mašina - Opšti principi za projektovanje

- Ocena rizika i smanjenje rizika SRPS ISO 12100:2014

**Safety of machinery - Electrical equipment of machines - Part 1: EN 60204-1:2016**

Bezbednost mašina - Električna oprema mašina - Deo 1: EN 60204-1:2016

### Declaration on installation in the sense of EC Machinery Directive (2006/42/EC) Annex II B

Izjava o ugradnji u skladu sa EC Mašinskom direktivom (2006/42/EC) Anex II B

**Product of "FLUIDOTEHNIC" assemble into mechanical devices and equipment. Start-up is not admissible unless it has been verified that the whole equipment, meets the requirements defined in the EC machinery Directive (2006/42/EC)**

Proizvod "FLUIDOTEHNIC"-a se ugrađuje u drugu opremu i dodatne uređaje. Pokretanje nije dozvoljeno sve dok i relevantna oprema u koju se ugrađuju ne bude u skladu sa Mašinskom direktivom (2006/42/EC)

**The manufacturer undertakes to supply the relevant information of incomplete machine on request to responsible inspector by electronic way. Technical documents of the machine is prepared in accordance with Annex VII, part B Machinery Directive (2006/42/EC)**

Proizvođač se obavezuje da će elektronskim putem dostaviti odgovarajuće podatke o delimično završenoj mašini nadležnom inspektor u njegov zahtev. Tehnička dokumentacija je izrađena u skladu sa Anexom 7, deo B Mašinske direktive.

Vrnjačka Banja, 01/02/2017 godine



Šljivić Miroslav, General Manager

The EC Declaration of Conformity is only valid in conjunction with confirmation that the device has been correctly applied, installed, inspected and maintained according to the operating instructions provided. The validity of the declaration will cease in case of any modification and/or supplement not previously approved by "FLUIDOTEHNIC".

Ova deklaracija o usaglašenosti važi samo u slučaju da je uređaj pravilno ugrađen, iskontrolisan i da se koristi i održava u skladu sa uputstvom za rukovanje i održavanje. Važenje izjave prestaje u slučaju bilo kakve modifikacije ili dodatka koji nisu prethodno odobreni od "FLUIDOTEHNIC"-a.





Fluidotehnic d.o.o.

Serbia

36210 Vrnjacka Banja

Rudjinci 175/A

Tel: +381-(0)36-631-710

+381-(0)36-631-711

Fax: +381-(0)36-631-712

[www.fluidotehnic.com](http://www.fluidotehnic.com)

[office@fluidotehnic.com](mailto:office@fluidotehnic.com)

© Fluidotehnic doo

02/2018